



FOR SUBLEASE

Suite 300- 1490 W Broadway



FEATURES

- ASSEMBLY USE
- FULL FLOOR OPPORTUNITY
- CLOSE TO TRANSIT
- FURNITURE AVAILABLE



PLEASE CONTACT:

Holly Kingan
604-684-8291 ext. 103
holly@rpmrealty.ca



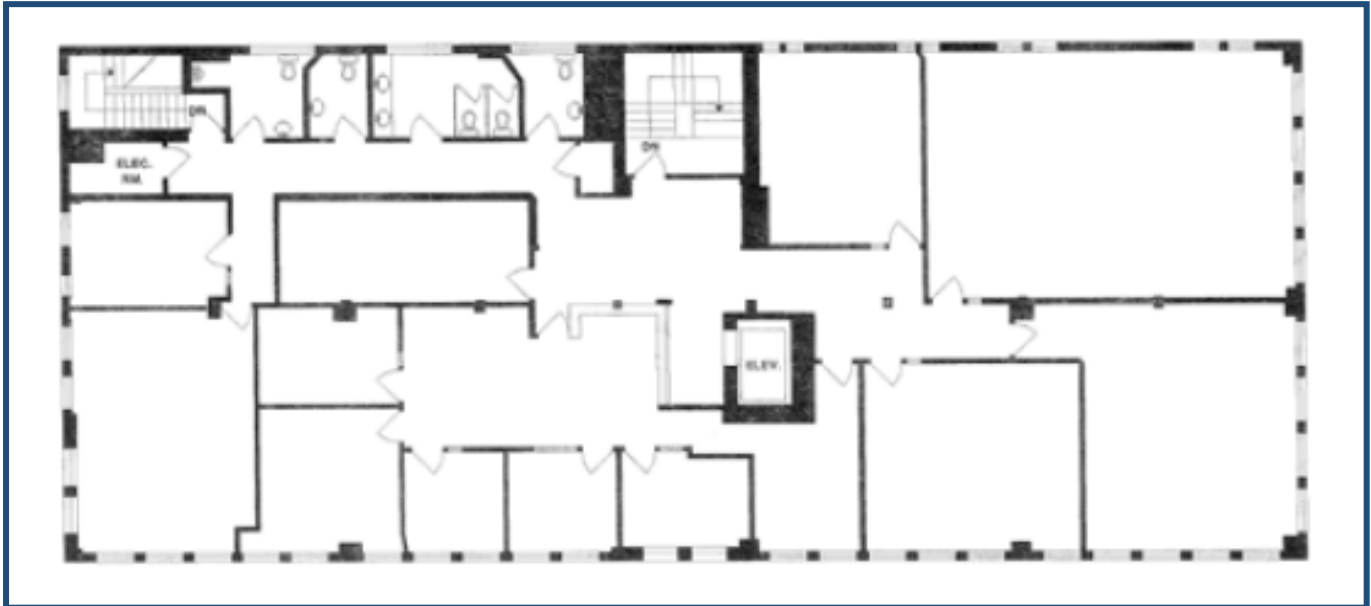
RPM Realty Ltd.
#1010
1188 West Georgia Street
Vancouver BC, V6E 4A2
Phone: 604-684-8291
Web: www.rpmrealty.ca



PROPERTY INFORMATION

Suite 300-1490 W Broadway

BUILDING LOCATION:	Located in the heart of the South Granville area on the corner of West Broadway and Granville Street. This heritage building also includes tenants such as Blenz Coffee and McDonalds.
ADDRESS:	Suite 300-1490 West Broadway.
AREA OF PREMISES:	Approximately 5,671 square feet.
DESCRIPTION:	Nicely built out with 5 large classrooms, 2 small classrooms, 4 offices, kitchen/staff room and large reception area.
BASE RENT:	Please contact listing broker.
ADDITIONAL RENT:	\$14.92 per square foot per annum (estimated for 2015). Not including Hydro and in-suite janitorial.
TERM:	Available with 30 days notice. Sublease term is negotiable. Term expires May 30, 2024.



RPM Realty Ltd.
#1010
1188 West Georgia Street
Vancouver BC, V6E 4A2
Phone: 604-684-8291
Web: www.rpmrealty.ca