



**FOR LEASE**

**Suite 860 - 605 Robson St.**



## FEATURES

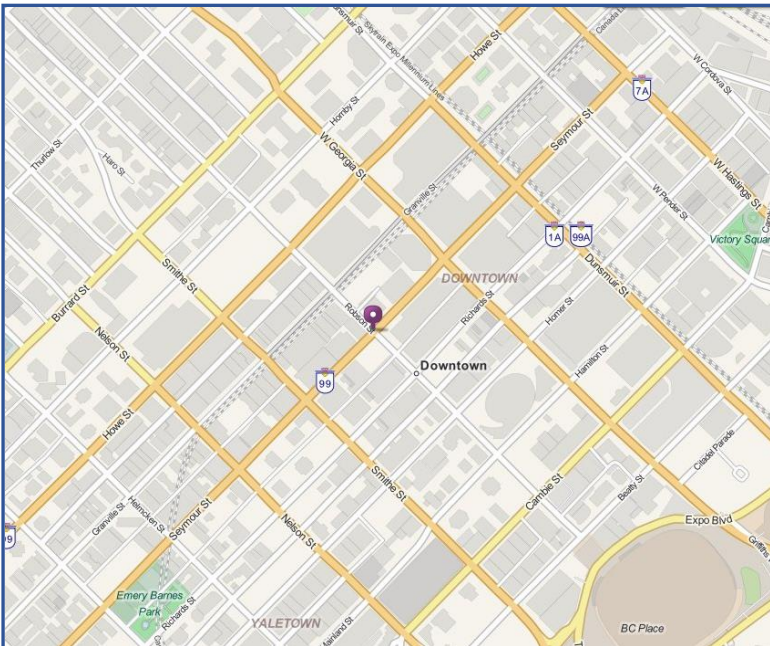
- WELL MAINTAINED “B” CLASS BUILDING
- CLOSE TO TRANSIT, GRANVILLE STREET, PACIFIC CENTRE AND TELUS GARDEN.
- PARKING AVAILABLE

**Please Contact:**

**Roy Gibbs**  
[roy@rpmrealty.ca](mailto:roy@rpmrealty.ca)

**Paul Oteman**  
[paul@rpmrealty.ca](mailto:paul@rpmrealty.ca)

**Holly Kingan**  
[holly@rpmrealty.ca](mailto:holly@rpmrealty.ca)



**RPM Realty Ltd.**

#1010

1188 West Georgia Street  
Vancouver BC, V6E 4A2

Phone: 604-684-8291

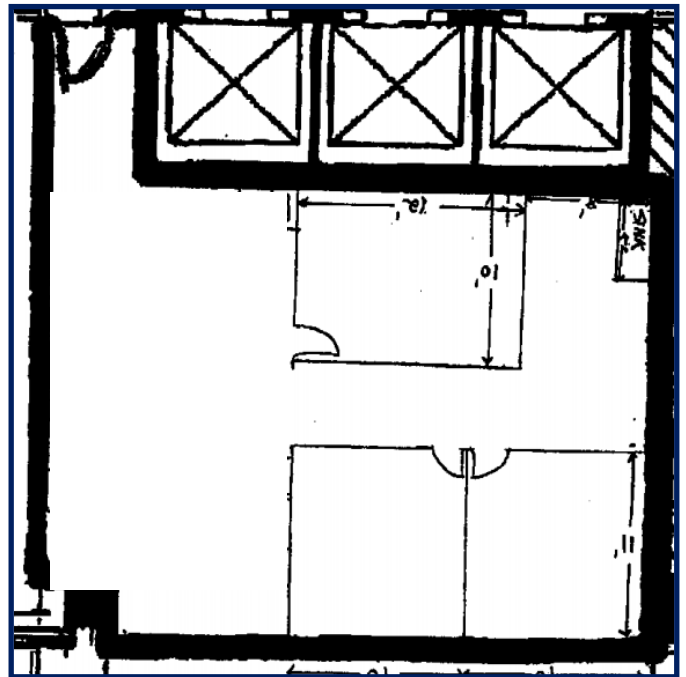
Web: [www.rpmrealty.ca](http://www.rpmrealty.ca)



# PROPERTY INFORMATION

## #860 - 605 Robson

<b>BUILDING LOCATION:</b>	Located on the corner of Robson and Seymour in Downtown Vancouver. Very convenient to Pacific Centre, Skytrain, Library Square and numerous shops, services and restaurants.
<b>PREMISES:</b>	Approximately 1,025 square feet. Improved with 2 offices, meeting room, reception/open area and kitchenette.
<b>BASE RENT:</b>	\$20.00 per square foot per annum.
<b>ADDITIONAL RENT:</b>	\$16.77 per square foot per annum (2015 estimate).
<b>AVAILABILITY:</b>	Available immediately.
<b>PARKING:</b>	1:1,200 sf leased. Random: \$195/month. Reserved: \$300/month.



**RPM Realty Ltd.**  
#1010  
1188 West Georgia Street  
Vancouver BC, V6E 4A2  
Phone: 604-684-8291  
Web: [www.rpmrealty.ca](http://www.rpmrealty.ca)