



OFFICE SPACE FOR LEASE

605 Robson Street



FEATURES

- WELL MAINTAINED “B” CLASS BUILDING.
- ELEVATOR EXPOSURE.
- CLOSE TO TRANSIT.
- PARKING AND BIKE STORAGE AVAILABLE.

Please Contact:

Roy Gibbs

roy@rpmrealty.ca

604-684-8291 ext 102

Paul Oteman

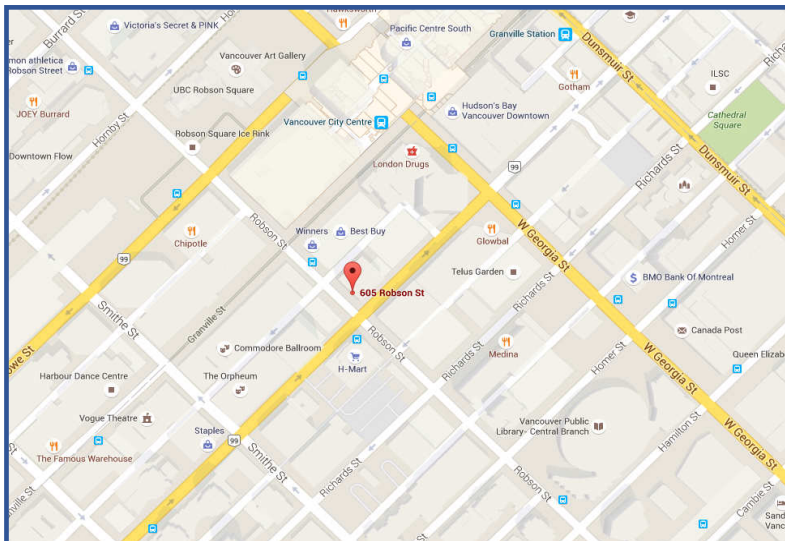
paul@rpmrealty.ca

604-684-8291 ext 101

Holly Kingan

holly@rpmrealty.ca

604-684-8291 ext 103



RPM Realty Ltd.

#1010

1188 West Georgia Street

Vancouver BC, V6E 4A2

604-684-8291

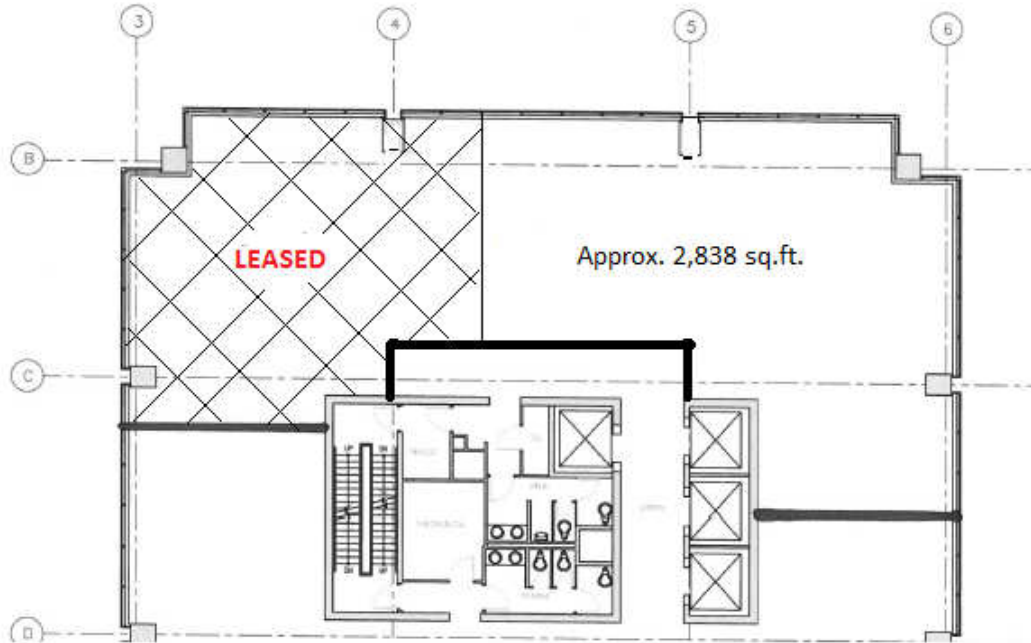
www.rpmrealty.ca



PROPERTY INFORMATION

4th Floor, 605 Robson

BUILDING LOCATION:	Located on the corner of Robson and Seymour Streets in Downtown Vancouver. Very convenient to Pacific Centre, Skytrain, Library Square and numerous shops, services and restaurants.
BASE RENT:	Please contact listing agents.
ADDITIONAL RENT:	\$17.39 per square foot per annum (2017 estimate).
LEASING INCENTIVES:	Available, please contact listing agents to discuss.
DESCRIPTION:	Approximately 2,838 sq.ft. Warm shell condition. Elevator exposure, corner unit facing Seymour and Robson Streets.
TERM:	Available Immediately for fixturing.
PARKING:	1:1,200 sf leased. Random: \$200/month. Reserved: \$350/month.



The information contained herein has been gathered from sources deemed reliable, but is not warranted as such and does not form any part of any future contract and may be altered or withdrawn at any time without notice. This information is not intended to induce the breach of an existing agency relationship.



RPM Realty Ltd.
#1010-1188 West Georgia Street
Vancouver BC, V6E 4A2
604-684-8291
www.rpmrealty.ca